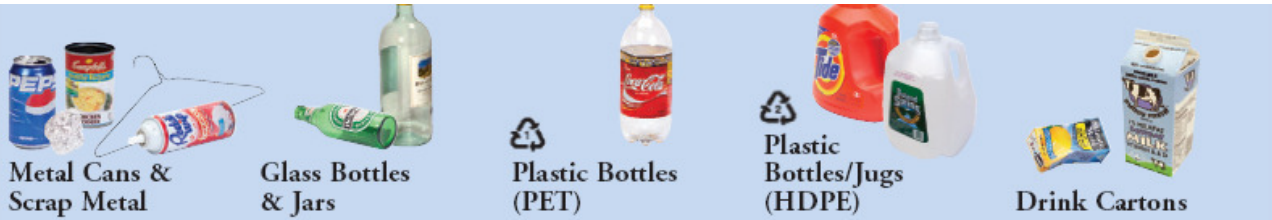


For Your Blue Bin

Examples



Metal Cans & Scrap Metal

- Aluminum and tin cans
- Foil & pie plates
- Empty steel aerosol cans
- Empty latex paint cans
- Scrap metal
- Toasters, irons
- Wire hangers

Glass Bottles & Jars

- Mayonnaise jars
- Wine bottles
- Beer bottles
- Spaghetti sauce jars
- Applesauce jars
- Salsa jars
- Vinegar bottles
- Baby food jars

Plastic Bottles (PET)

- All plastic bottles and jugs with the ♻️ symbol on the bottom
- Soda & juice bottles
- Salad dressing bottles
- Shampoo bottles
- Window cleaner bottles
- Water bottles

Plastic Bottles/Jugs (HDPE)

- Colored and uncolored bottles with the ♻️ symbol on the bottom
- Milk jugs
- Detergent bottles
- Juice bottles
- Saline solution bottles
- Fabric softener & bleach bottles

Drink Cartons

- Milk and juice cartons
- Flavored milk boxes
- Juice boxes
- Cream and creamer containers

How to

Rinse cans. A thin skin of dry latex paint in can or on lid is okay.

Rinse. Remove caps and lids. Okay to recycle metal lids. No need to remove paper or plastic labels.

Rinse. Remove and throw away plastic caps and lids. No need to remove paper or plastic labels.

Rinse. Remove and throw away plastic caps and lids.

Rinse. Throw away straws.

Exceptions

- No scrap metal longer than 3 ft. or heavier than 35 lbs.
- No aluminum aerosol cans
- No oil-based paint cans
- No hypodermic needles

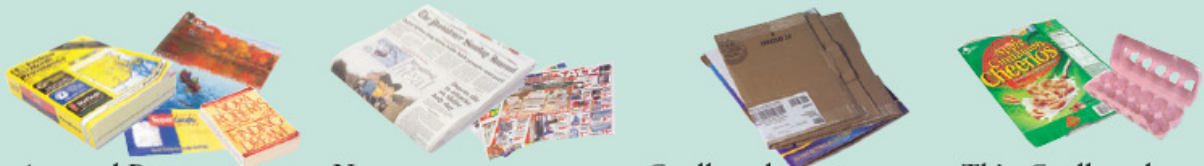
- No broken glass
- No cups, dishes, glass windows, plates, Pyrex,[®] ceramics, mirrors, light-bulbs, crystal

- Only plastic shaped into bottles and jugs
- No plastic shopping bags
- No plastic food wrap, no potato chip and sandwich bags
- No Styrofoam[®]
- No plastics with symbols ♻️ through ♻️ or plastics with no number symbol
- No plastic tubs (yogurt, margarine, ice cream)
- No automotive fluid bottles (oil, antifreeze, brake fluid)
- No plastic deli containers

- No refrigerated or frozen food and vegetable boxes
- No ice cream boxes
- No TV dinners

For Your Green Bin

Examples



Assorted Paper

- Mail, envelopes (windows ok)
- Magazines, catalogs
- Phonebooks
- Writing/ledger paper
- Paperbacks
- Paper bags
- Greeting cards
- Wrapping paper
- Shredded paper
- Computer paper

Newspapers

- All newspapers, ads and inserts

Cardboard

Boxes and other corrugated cardboard (smooth on the outside, wavy in the middle).

Thin Cardboard

- All thin cardboard
- Shoe boxes
 - Cereal boxes
 - Pasta boxes (window ok)
 - Toilet paper rolls
 - Gift boxes
 - Cake mix boxes
 - Toothpaste boxes
 - Tissue boxes
 - Paper egg cartons

How to

Place in green bin or paper bag. Paper and thin cardboard can be mixed together.

Flatten and tie with string. Bundles must be less than 3 feet long or wide. Place next to your bin.

Place in green bin but throw away plastic or wax liners.

Exceptions

- No paper towels, tissues, napkins
- No cigarette packs
- No candy wrappers
- No waxed or plastic-coated paper
- No foil wrapping paper

- Do not put in a plastic bag!

- No cardboard larger than 3 feet
- No dirty or greasy cardboard
- No pizza boxes

- No take-out or frozen food boxes
- No soda or beer packaging
- No laundry detergent soap boxes
- No boxes with silver or foil coatings
- Nothing dirty, greasy or plastic-coated